

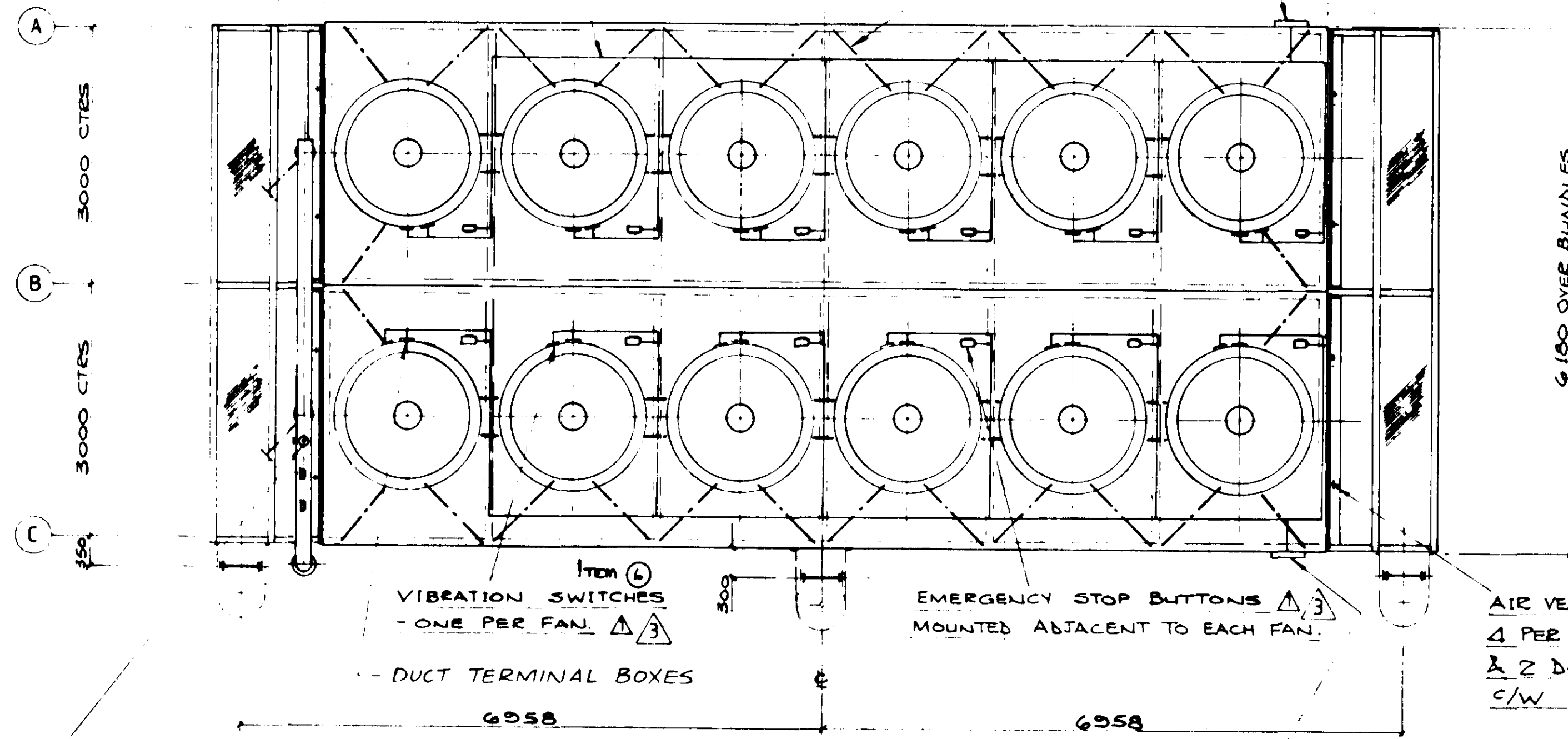
EARTHING BOSSSES ON COLIC
 A 3A ONLY. - 50 Ø x 50 THK
 TAPPED FOR 1/2" UNC x 19 LG
 BRASS SCREW + 25% WASHER

CABLE RUNS

ELEVATION

12,046 SIDEWALL

ADDITIONAL SILENCER BRACING

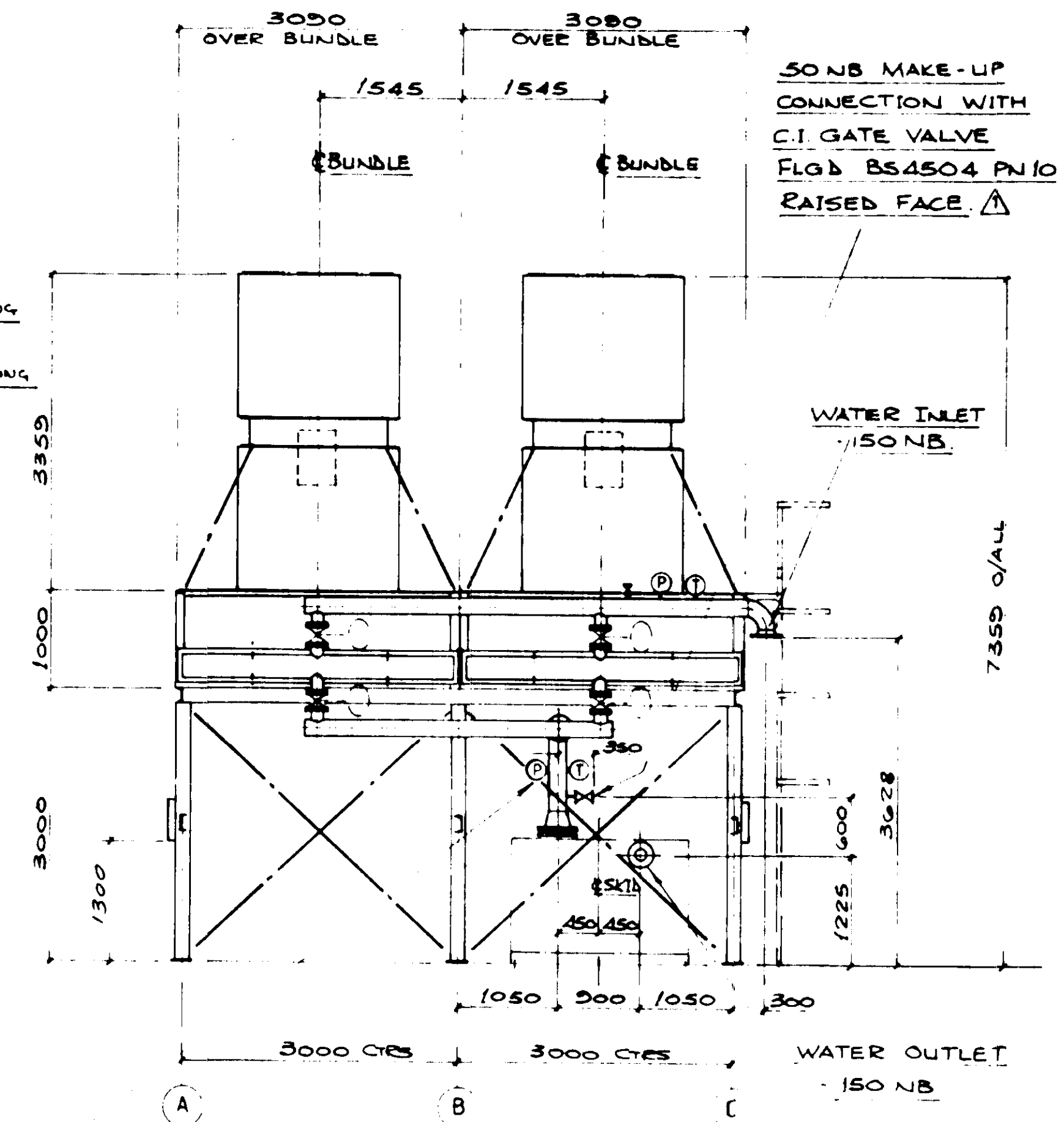


PLAN

AIR VENT IN INLET MANIFOLD - 1/2" BSP BOSS C/W VALVE

1 JUNCTION BOX (JB3GTA FOR UNIT 3 & JB4GTA FOR UNIT 4) FOR LOCAL CONTROLS & INSTRUMENTS

Nº REQ'D = 1 off UNIT AS DRAWN FOR UNIT 4 GAS TURBINE &
 1 off UNIT OPP HAND FOR UNIT 3 GAS TURBINE



END VIEW ON FIXED END
 (WALKWAY OMITTED FOR CLARITY)

2 OFF PRESSURE GAUGES ② - (0 to +7 BAR) AND - Item ④
 2 OFF TEMPERATURE GAUGES ① - (0 to +100 °C) - Item ⑤
 ONE OF EACH GAUGE MOUNTED ON BOTH INLET & OUTLET MANIFOLDS

OPERATING DATA	unit.
Operating Pressure	Bar ^G 3.1 MAX.
Design	" 7.0
Test	" 10.5
Inlet Temperature	°C 48.3
Outlet	" 38.0
Design	" 120
Air Design Temp.	" 30
Nozzle Inlet	" 1x150
Nozzle Outlet	" 1x150
Flange Rating	BS 4504 PN10
Fan Type	WOODS 60J1/3 D160/27 26° BA 585 RPM
INSPECTION	
Drawing Examination By	JOHN BROWN ENG. LTD
Construction Control By	"
Pressure Test By	GEA SPIRO - GILLS LTD.
Inspection Acc. To	GEA STD'S & CUSTOMER
Design Acc. To	"

GENERAL NOTES

- ALL STEELWORK TO BS.4360 - 43A
- FABRICATIONS TO BS.449.
- BOLTS TO BS.3692 - GR.8.8 TON (SPUN GALVANISED)
- NOZZLES: MATING FLANGES AND GASKETS ARE NOT SUPPLIED BUT ALL NOZZLES ARE SEALED FOR TRANSIT WITH STEEL BLANKS AND MIN. OF 4 BOLTS.
- FINISH: TUBE BUNDLE SIDEWALLS, TUBE SUPPORT BEAMS, PLENUM DIVIDERS, FAN DECKS, FAN CASINGS, FAN GUARDS, HEADER TANK AND SUPPORT STRUCTURE TO BE HOT DIP GALVANISED TO BS.729.

ALL PIPEWORK AND HEADERS TO BE PAINTED IN ACCORDANCE WITH J. PAINT SPECIFICATION SHEET 0998-6670-001
 PAINT SYSTEM 0998-PB-1 FINISH COLOUR TO BS.4800 00A09 (DARK GR)

REFERENCE DRAWINGS

GENERATOR LOADING PLAN	33 09 203
STEELWORK ASSY	33 09 203
PUMPING SKID	33 09 203
GEN. ARRGT GT UNIT	33 09 203

**HYDRO-ELECTRIC
PETERHEAD GENERATING STATION**

CONTRACT No. 2052600 / C01	DRAWING No. 036 / 1328 / 7103	SHEET No. 01	REV No. 04
-------------------------------	----------------------------------	-----------------	---------------

JOHN BROWN John Brown Engineering Limited
 Clydebank, Dumbartonshire GB1 1YA

J.B.E. ORDER NUMBER : 07/24500

J.B.E. DRAWING NUMBER : 0998-7206-006 REV 04

REV	BY	DESCRIPTION
1	PJK	SPARE PART IDENTIFICATION Nos. ADDED
2	45	MODIFIED TO AS BUILT CONDITION
3	45	JUNCTION BOXES WERE MOUNTED ON FAN DECKS
4	45	HEADER TANK DELETED, LADDER RE-POSITIONED, TITLE AMENDED & WHERE INDICATED
DESCRIPTION		
GEA SPIRO-GILLS LTD		
TITLE GENERAL ARRANGEMENT C GENERATOR WATER COOLING		
FOR JOHN BROWN ENG. LTD (PET)		
THIS PRINT IS THE PROPERTY OF GEA SPIRO-GILLS LIMITED AND SHALL BE RETURNED ON DEMAND IF NOT RETURNED OR REPRODUCED OR USED DIRECTLY OR INDIRECTLY IN ANY WAY DETRIMENTAL TO THE INTERESTS OF GEA SPIRO-GILLS LIMITED		
CUSTOMER'S P.O.		JOB No.
07/24500		23050